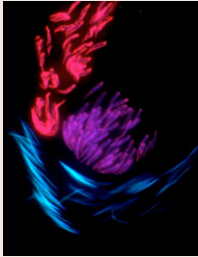


Journal of Cell Science

Volume 120 (9) 2007



Cover: Three developing spermatid bundles during *Drosophila* spermatogenesis. The cover shows the merged picture of anti-methylated H3K4 antibody staining on squashed testes of protamine-eGFP-expressing flies, counterstained with Hoechst for DNA. See article by C. Rathke et al. (pp. 1689-1700).

jcs.biologists.org

Research Articles

- 1521 **YWK-II protein as a novel G_o-coupled receptor for Müllerian inhibiting substance in cell survival.** Yin, X., Ouyang, S., Xu, W., Zhang, X., Fok, K. L., Wong, H. Y., Zhang, J., Qiu, X., Miao, S., Chan, H. C. and Wang, L.
- 1529 **Symmetrical localization of extrachromosomally replicating viral genomes on sister chromatids.** Kanda, T., Kamiya, M., Maruo, S., Iwakiri, D. and Takada, K.
- 1540 **A regulatory role for CRM1 in the multi-directional trafficking of splicing snRNPs in the mammalian nucleus.** Sleeman, J.
- 1551 **Functional importance of polymerization and localization of calsequestrin in *C. elegans*.** Cho, J. H., Ko, K. M., Singaravelu, G., Lee, W., Kang, G. B., Rho, S.-H., Park, B.-J., Yu, J.-R., Kagawa, H., Eom, S. H., Kim, D. H. and Ahnn, J.
- 1559 **RhoB plays an essential role in CXCR2 sorting decisions.** Neel, N. F., Lapierre, L. A., Goldenring, J. R. and Richmond, A.
- 1572 **Inflammatory ROS promote and cooperate with the Fanconi anemia mutation for hematopoietic senescence.** Zhang, X., Sejas, D. P., Qiu, Y., Williams, D. A. and Pang, Q.
- 1584 **Sustained cell polarity and virulence in the phytopathogenic fungus *Ustilago maydis* depends on an essential cyclin-dependent kinase from the Cdk5/Pho85 family.** Castillo-Lluva, S., Alvarez-Tabarés, I., Weber, I., Steinberg, G. and Pérez-Martín, J.
- 1596 **The control of tissue architecture over nuclear organization is crucial for epithelial cell fate.** Chandramouly, G., Abad, P. C., Knowles, D. W. and Lelièvre, S. A.
- 1607 **Crosstalk between neovessels and mural cells directs the site-specific expression of MT1-MMP to endothelial tip cells.** Yana, I., Sagara, H., Takaki, S., Takatsu, K., Nakamura, K., Nakao, K., Katsuki, M., Taniguchi, S., Aoki, T., Sato, H., Weiss, S. J. and Seiki, M.
- 1615 **Dose-dependent inhibition of proteasome activity by a mutant ubiquitin associated with neurodegenerative disease.** van Tijn, P., de Vrij, F. M. S., Schuurman, K. G., Dantuma, N. P., Fischer, D. F., van Leeuwen, F. W. and Hol, E. M.
- 1624 **Traction force microscopy in *Dictyostelium* reveals distinct roles for myosin II motor and actin-crosslinking activity in polarized cell movement.** Lombardi, M. L., Knecht, D. A., Dembo, M. and Lee, J.
- 1635 **Acetylation regulates tropomyosin function in the fission yeast *Schizosaccharomyces pombe*.** Skoumpla, K., Coulton, A. T., Lehman, W., Geeves, M. A. and Mulvihill, D. P.
- 1646 **TGFβ3 inhibits E-cadherin gene expression in palate medial-edge epithelial cells through a Smad2-Smad4-LEF1 transcription complex.** Nawshad, A., Medici, D., Liu, C.-C. and Hay, E. D.
- 1654 **The P2Y₂ nucleotide receptor requires interaction with αv integrins to access and activate G₁₂.** Liao, Z., Seye, C. I., Weisman, G. A. and Erb, L.
- 1663 **Characterisation of IRTKS, a novel IRSp53/MIM family actin regulator with distinct filament bundling properties.** Millard, T. H., Dawson, J. and Machesky, L. M.
- 1673 **Experimental evidence for the influence of molecular crowding on nuclear architecture.** Richter, K., Nessling, M. and Lichter, P.
- 1681 **Self-association and BiP dissociation are not sufficient for activation of the ER stress sensor Ire1.** Oikawa, D., Kimata, Y. and Kohno, K.
- 1689 **Transition from a nucleosome-based to a protamine-based chromatin configuration during spermiogenesis in *Drosophila*.** Rathke, C., Baarends, W. M., Jayaramaiah-Raja, S., Bartkuhn, M., Renkawitz, R. and Renkawitz-Pohl, R.

JCS Prize

1503 **2006 Winner: Satomi Matsuoka.** Watt, F.

Commentary

1505 **Epithelial tight junctions, gene expression and nucleo-junctional interplay.** Matter, K. and Balda, M. S.

Short Report

1513 **Stuck in reverse: loss of LC1 in *Trypanosoma brucei* disrupts outer dynein arms and leads to reverse flagellar beat and backward movement.** Baron, D. M., Kabututu, Z. P. and Hill, K. L.

Author Correction

1701 **Two stages of light-dependent TRPL-channel translocation in *Drosophila* photoreceptors.** Cronin, M. A., Lieu, M.-H. and Tsunoda, S.

Erratum

1702 **The role of GW/P-bodies in RNA processing and silencing.** Jakymiw, A., Pauley, K. M., Li, S., Ikeda, K., Lian, S., Eystathiou, T., Satoh, M., Fritzler, M. J. and Chan, E. K. L.