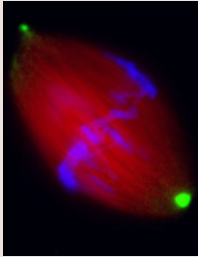


Journal of Cell Science

Volume 121 (14) 2008



Cover: A bipolar metaphase spindle assembled in meiotic *Xenopus* egg extract was imaged using X-Rhodamine-labeled tubulin (red), antibody against nuclear mitotic apparatus protein (NuMA, green) and DAPI (DNA, blue). See article by A. C. Groen et al. (pp. 2293-2300).

jcs.biologists.org

Research Articles

- 2287 **Exceptional mechanical and structural stability of HSV-1 unveiled with fluid atomic force microscopy.** Liashkovich, I., Hafezi, W., Kühn, J. E., Oberleithner, H., Kramer, A. and Shahin, V.
- 2293 **A novel small-molecule inhibitor reveals a possible role of kinesin-5 in anastral spindle-pole assembly.** Groen, A. C., Needleman, D., Brangwynne, C., Gradinaru, C., Fowler, B., Mazitschek, R. and Mitchison, T. J.
- 2301 **TRPC6 channels promote dendritic growth via the CaMKIV-CREB pathway.** Tai, Y., Feng, S., Ge, R., Du, W., Zhang, X., He, Z. and Wang, Y.
- 2308 **Initiation and execution of lipotoxic ER stress in pancreatic β -cells.** Cunha, D. A., Hekerman, P., Ladrière, L., Bazarra-Castro, A., Ortis, F., Wakeham, M. C., Moore, F., Rasschaert, J., Cardozo, A. K., Bellomo, E., Overbergh, L., Mathieu, C., Lupi, R., Hai, T., Herchuelz, A., Marchetti, P., Rutter, G. A., Eizirik, D. L. and Cnop, M.
- 2319 **UbcH10 has a rate-limiting role in G1 phase but might not act in the spindle checkpoint or as part of an autonomous oscillator.** Walker, A., Acquaviva, C., Matsusaka, T., Koop, L. and Pines, J.
- 2327 **PKC ζ -mediated phosphorylation controls budding of the pre-chylomicron transport vesicle.** Siddiqi, S. A. and Mansbach, C. M., II
- 2339 **PKC γ mutations in spinocerebellar ataxia type 14 affect C1 domain accessibility and kinase activity leading to aberrant MAPK signaling.** Verbeek, D. S., Goedhart, J., Bruinsma, L., Sinke, R. J. and Reits, E. A.
- 2350 **Dual role for microtubules in regulating cortical contractility during cytokinesis.** Murthy, K. and Wadsworth, P.
- 2360 **Caveolin-1-dependent β 1 integrin endocytosis is a critical regulator of fibronectin turnover.** Shi, F. and Sottile, J.
- 2372 ***Arabidopsis* SPIRAL2 promotes uninterrupted microtubule growth by suppressing the pause state of microtubule dynamics.** Yao, M., Wakamatsu, Y., Itoh, T. J., Shoji, T. and Hashimoto, T.
- 2382 **eIF3k regulates apoptosis in epithelial cells by releasing caspase 3 from keratin-containing inclusions.** Lin, Y.-M., Chen, Y.-R., Lin, J.-R., Wang, W.-J., Inoko, A., Inagaki, M., Wu, Y.-C. and Chen, R.-H.
- 2394 **Phosphorylation of AFAP-110 affects podosome lifespan in A7r5 cells.** Dorfleutner, A., Cho, Y., Vincent, D., Cunnick, J., Lin, H., Weed, S. A., Stehlik, C. and Flynn, D. C.
- 2406 **In migrating cells, the Golgi complex and the position of the centrosome depend on geometrical constraints of the substratum.** Pouthas, F., Girard, P., Lecaudey, V., Ly, T. B. N., Gilmour, D., Boulin, C., Peppercok, R. and Reynaud, E. G.
- 2415 **Lipid droplets are arrested in the ER membrane by tight binding of lipidated apolipoprotein B-100.** Ohsaki, Y., Cheng, J., Suzuki, M., Fujita, A. and Fujimoto, T.
- 2423 **The mitochondrial targeting sequence tilts the balance between mitochondrial and cytosolic dual localization.** Regev-Rudzki, N., Yogeve, O. and Pines, O.

Sticky Wicket

2277 **Presentations of the damned I. Mole**

Commentary

2279 **Regulation of integrin activation through the B-cell receptor.** Arana, E., Harwood, N. E. and Batista, F. D.