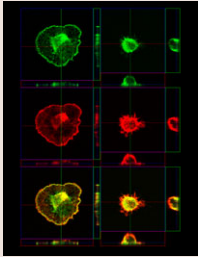


Journal of Cell Science

Volume 121 (18) 2008



Cover: 3D representation of spreading NIH3T3 cells with or without knockdown of Crk-family proteins. Shown are images of a wild-type NIH3T3 cell (left) and of one that expressed shRNA targeting all Crk family proteins (right). Cells were immunostained using antibody against vinculin (green), and F-actin was visualized with Texas-Red-conjugated phalloidin (red) (top and middle, respectively). The merged image is shown at the bottom. Red and green rectangular sub-panels represent x-z and y-z axes of the cell images. See article by S. Antoku et al. (p. 3071).

jcs.biologists.org

Research Articles

- 2983 **The regulated exocytosis of enlargosomes is mediated by a SNARE machinery that includes VAMP4.** Cocucci, E., Racchetti, G., Rupnik, M. and Meldolesi, J.
- 2992 **HIF1 transcription factor regulates laminin-332 expression and keratinocyte migration.** Fitsialos, G., Bourget, I., Augier, S., Ginouvès, A., Rezzonico, R., Odorisio, T., Cianfarani, F., Virolle, T., Pouysségur, J., Meneguzzi, G., Berra, E., Ponzio, G. and Buscà, R.
- 3002 **Heat shock causes a decrease in polysomes and the appearance of stress granules in trypanosomes independently of eIF2 α phosphorylation at Thr169.** Kramer, S., Queiroz, R., Ellis, L., Webb, H., Hoheisel, J. D., Clayton, C. and Carrington, M.
- 3015 **Cytosolic PLA $_2$ activation in Purkinje neurons and its role in AMPA-receptor trafficking.** Mashimo, M., Hirabayashi, T., Murayama, T. and Shimizu, T.
- 3025 **Efficient coupling of Sec23-Sec24 to Sec13-Sec31 drives COPII-dependent collagen secretion and is essential for normal craniofacial development.** Townley, A. K., Feng, Y., Schmidt, K., Carter, D. A., Porter, R., Verkade, P. and Stephens, D. J.
- 3035 **VRK1 phosphorylates CREB and mediates *CCND1* expression.** Kang, T.-H., Park, D.-Y., Kim, W. and Kim, K.-T.
- 3042 **Synapsin-I- and synapsin-II-null mice display an increased age-dependent cognitive impairment.** Corradi, A., Zanardi, A., Giacomini, C., Onofri, F., Valtorta, F., Zoli, M. and Benfenati, F.
- 3052 **FFAT rescues VAPA-mediated inhibition of ER-to-Golgi transport and VAPB-mediated ER aggregation.** Prosser, D. C., Tran, D., Gougeon, P.-Y., Verly, C. and Ngsee, J. K.
- 3062 **Centrin4 coordinates cell and nuclear division in *T. brucei*.** Shi, J., Franklin, J. B., Yelinek, J. T., Ebersberger, I., Warren, G. and He, C. Y.
- 3071 **A crucial role in cell spreading for the interaction of Abl PxxP motifs with Crk and Nck adaptors.** Antoku, S., Saksela, K., Rivera, G. M. and Mayer, B. J.
- Sticky Wicket**
2973 **I want you. Mole**
- Commentary**
2975 **All muscle satellite cells are equal, but are some more equal than others?** Zammit, P. S.
- 3083 **Chondroitin-4-sulfation negatively regulates axonal guidance and growth.** Wang, H., Katagiri, Y., McCann, T. E., Unsworth, E., Goldsmith, P., Yu, Z.-X., Tan, F., Santiago, L., Mills, E. M., Wang, Y., Symes, A. J. and Geller, H. M.
- 3092 **The GDP-dependent Rab27a effector coronin 3 controls endocytosis of secretory membrane in insulin-secreting cell lines.** Kimura, T., Kaneko, Y., Yamada, S., Ishihara, H., Senda, T., Iwamatsu, A. and Niki, I.
- 3099 **The GPI-anchored superoxide dismutase SodC is essential for regulating basal Ras activity and for chemotaxis of *Dictyostelium discoideum*.** Veeranki, S., Kim, B. and Kim, L.