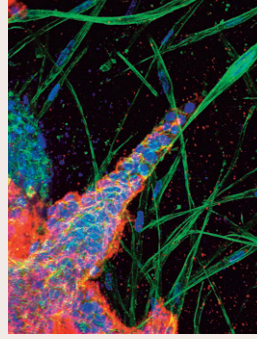


Journal of
Cell Science
 jcs.biologists.org

Volume 122 (18) September 15, 2009



Cover: Collective invasion of breast cancer cells into a fibroblast-rich 3D collagen lattice. Spheroids of MCF-7 cells were cultured for 7 days with non-transformed human fibroblasts. Breast cancer cells are E-cadherin positive (red) and retain their cell-cell junctions while invading, whereas fibroblasts are E-cadherin negative. Nuclei (DAPI, blue), F-actin (phalloidin, green). See article by O. Iliina and P. Friedl (pp. 3203-3208).

- Sticky Wicket**
 3201 **Genetic drift.** X-Gal
- MINIFOCUS: Collective cell migration**
- Cell Science at a Glance**
 3203 **Mechanisms of collective cell migration at a glance.** Iliina, O. and Friedl, P.
 3209 **Wound repair at a glance.** Shaw, T. J. and Martin, P.
- Commentary**
 3215 **Collective cell migration in development.** Weijer, C. J.
- Short Report**
 3225 **Liprin- α 1 promotes cell spreading on the extracellular matrix by affecting the distribution of activated integrins.** Asperti, C., Astro, V., Totaro, A., Paris, S. and de Curtis, I.
- Research Articles**
 3233 **Animal cell hydraulics.** Charras, G. T., Mitchison, T. J. and Mahadevan, L.
 3242 **Protein phosphatase 2A negatively regulates aPKC signaling by modulating phosphorylation of Par-6 in *Drosophila* neuroblast asymmetric divisions.** Ogawa, H., Ohta, N., Moon, W. and Matsuzaki, F.
 3250 **Sequential signaling in plasma-membrane domains during macropinosome formation in macrophages.** Yoshida, S., Hoppe, A. D., Araki, N. and Swanson, J. A.
 3262 **Mimicking proteasomal release of polyglutamine peptides initiates aggregation and toxicity.** Raspe, M., Gillis, J., Krol, H., Krom, S., Bosch, K., van Veen, H. and Reits, E.
 3272 **Loss of anchorage in checkpoint-deficient cells increases genomic instability and promotes oncogenic transformation.** Cremona, C. A. and Lloyd, A. C.
 3282 **Nap1-mediated actin remodeling is essential for mammalian myoblast fusion.** Nowak, S. J., Nahirney, P. C., Hadjantonakis, A.-K. and Baylies, M. K.
 3294 **VEGF and inhibitors of TGF β type-I receptor kinase synergistically promote blood-vessel formation by inducing α 5-integrin expression.** Liu, Z., Kobayashi, K., van Dinther, M., van Heiningen, S. H., Valdimarsdottir, G., van Laar, T., Scharpfenecker, M., Löwik, C. W. G. M., Goumans, M.-J., ten Dijke, P. and Pardali, E.
 3303 **VEGFR2-PLC γ 1 axis is essential for endothelial specification of VEGFR2⁺ vascular progenitor cells.** Sase, H., Watabe, T., Kawasaki, K., Miyazono, K. and Miyazawa, K.
 3312 **SUMO-dependent regulation of centrin-2.** Klein, U. R. and Nigg, E. A.
 3322 **An intrinsic quality-control mechanism ensures unconventional secretion of fibroblast growth factor 2 in a folded conformation.** Cespón Torrado, L., Temmerman, K., Müller, H.-M., Mayer, M. P., Seelenmeyer, C., Backhaus, R. and Nickel, W.
 3330 **Desmethylclomipramine induces the accumulation of autophagy markers by blocking autophagic flux.** Rossi, M., Munarriz, E. R., Bartesaghi, S., Milanese, M., Dinsdale, D., Guerra-Martin, M. A., Bampton, E. T. W., Glynn, P., Bonanno, G., Knight, R. A., Nicotera, P. and Melino, G.
 3340 **Epidermal-growth-factor-induced proliferation of astrocytes requires Egr transcription factors.** Mayer, S. I., Rössler, O. G., Endo, T., Charnay, P. and Thiel, G.
 3351 **Ligand-independent signaling by disulfide-crosslinked dimers of the p75 neurotrophin receptor.** Vilar, M., Charalampopoulos, I., Kenchappa, R. S., Reversi, A., Klos-Applequist, J. M., Karaca, E., Simi, A., Spuch, C., Choi, S., Friedman, W. J., Ericson, J., Schiavo, G., Carter, B. D. and Ibáñez, C. F.
 3358 **Sumoylation of Prox1 controls its ability to induce VEGFR3 expression and lymphatic phenotypes in endothelial cells.** Pan, M.-R., Chang, T.-M., Chang, H.-C., Su, J.-L., Wang, H.-W. and Hung, W.-C.
 3365 **Stabilin-1 mediates phosphatidylserine-dependent clearance of cell corpses in alternatively activated macrophages.** Park, S.-Y., Jung, M.-Y., Lee, S.-J., Kang, K.-B., Gratchev, A., Riabov, V., Kzhyshkowska, J. and Kim, I.-S.
 3374 **PDZ-domain-directed basolateral targeting of the peripheral membrane protein FRMPD2 in epithelial cells.** Stenzel, N., Fetzer, C. P., Heumann, R. and Erdmann, K. S.
 3385 **Dopamine regulates phosphorylation of VEGF receptor 2 by engaging Src-homology-2-domain-containing protein tyrosine phosphatase 2.** Sinha, S., Vohra, P. K., Bhattacharya, R., Dutta, S., Sinha, S. and Mukhopadhyay, D.
 3393 **A novel mechanism of sodium iodide symporter repression in differentiated thyroid cancer.** Smith, V. E., Read, M. L., Turnell, A. S., Watkins, R. J., Watkinson, J. C., Lewy, G. D., Fong, J. C. W., James, S. R., Eggo, M. C., Boelaert, K., Franklyn, J. A. and McCabe, C. J.
 3403 **Axonal targeting of Caspr2 in hippocampal neurons via selective somatodendritic endocytosis.** Bel, C., Oguievetskaia, K., Pitaval, C., Goutebroze, L. and Faivre-Sarrailh, C.
 3414 **The conserved metalloprotease invadolysin localizes to the surface of lipid droplets.** Cobbe, N., Marshall, K. M., Gururaja Rao, S., Chang, C.-W., Di Cara, F., Duca, E., Vass, S., Kassar, A. and Heck, M. M. S.